

ΑΩ

Galatia SIL Greek Unicode Fonts

Installation Guide



SIL International

Table of Contents

| | |
|---|----|
| Table of Contents | 2 |
| Installation Guide: Galatia SIL Greek Unicode Fonts..... | 3 |
| Introduction | 3 |
| License..... | 4 |
| Overview of the Galatia SIL Fonts..... | 5 |
| Installation and Setup in Mac OS X..... | 6 |
| Installation and Setup in Microsoft ® Windows ®..... | 6 |
| Windows 2000/XP Font Installation | 6 |
| Keyboard Installation | 6 |
| Keyman Install..... | 7 |
| Keyboard Install..... | 7 |
| Office 2000 Language Settings | 8 |
| Office XP Language Settings | 8 |
| Input Locales (for Windows 2000)..... | 9 |
| Using the Keyboard in Windows 2000..... | 9 |
| Input Locales (Text Services for Windows XP)..... | 10 |
| Using the Keyboard in Windows XP | 11 |
| Opening a File - Windows 2000..... | 11 |
| Opening a File - Windows XP..... | 13 |
| Uninstalling a Font, Input Locale, and Keyboard in Windows 2000/XP..... | 15 |
| Technical Reference | 16 |
| Conversion..... | 16 |
| Technical Support..... | 17 |

Installation Guide: Galatia SIL Greek Unicode Fonts

Introduction

The associated files with this package constitute the Galatia SIL Greek Unicode Fonts. SIL International (SIL) is an organization of linguists dedicated to the study and promotion of the thousands of languages around the world. We are happy to make these Unicode fonts available to the general public at no charge. You may (and are encouraged to) share these fonts with your friends and co-workers, but with the following restrictions:

1. All files must be copied together, including this one.
2. No fee may be charged for the fonts.
3. They may not be used as a basis for other fonts.

Even though these fonts are “free,” SIL retains all copyright and ownership of the included fonts and reserves the right to restrict their use and distribution at any time. They may be placed on websites, etc. but cannot be included in (or bundled with) any commercial product including hard disks or CD-ROMs without specific written permission.

The Galatia SIL fonts contain most of the symbols defined in Unicode 3.1 for Latin-1, Greek (excluding Coptic), Macintosh Character Set (US Roman), and 850WE/Latin-1 and are supplied in Regular and Bold weights.

In addition to the fonts themselves, this package includes a Keyman® keyboard file which simplifies the typing of Biblical Greek text in Windows. Users may produce their own keyboard file, if desired. No Macintosh keyboards are provided.

License

This is a legal agreement between you and SIL International (SIL) covering your use of the Galatia SIL Greek Unicode Fonts. Be sure to read the following agreement before using the software. IF YOU DO NOT AGREE TO THE TERMS OF THIS AGREEMENT, DO NOT USE THE SOFTWARE AND DESTROY ALL COPIES OF IT.

This copyright software is distributed as freeware. You may use this software without any charge and may distribute to others. The software is owned by SIL and is protected by United States copyright laws and international treaty provisions. Therefore, you must treat the software like any other copyrighted material (e.g. a book or musical recording).

Commercial distribution of the software is restricted without permission of SIL. If you wish to distribute this software contact SIL for details on obtaining a license.

You may not rent or lease the software, nor may you modify, adapt, translate, reverse engineer, decompile, or disassemble the software.

If you violate any part of this agreement, your right to use this software terminates automatically and you then must destroy all copies of this software in your possession.

THE SOFTWARE AND RELATED DOCUMENTATION ARE PROVIDED "AS IS" AND WITHOUT WARRANTY OF ANY KIND AND SIL EXPRESSLY DISCLAIMS ALL OTHER WARRANTIES, EXPRESS OR IMPLIED, INCLUDING, BUT NOT LIMITED TO, THE IMPLIED WARRANTIES OF MERCHANTABILITY AND FITNESS FOR A PARTICULAR PURPOSE. UNDER NO CIRCUMSTANCES SHALL SIL BE LIABLE FOR ANY INCIDENTAL, SPECIAL OR CONSEQUENTIAL DAMAGES THAT RESULT FROM THE USE OR INABILITY TO USE THE SOFTWARE OR RELATED DOCUMENTATION, EVEN IF SIL HAS BEEN ADVISED OF THE POSSIBILITY OF SUCH DAMAGES.

This Agreement shall be governed by the laws of the State of Texas. If for any reason a court of competent jurisdiction finds any provision of this Agreement, or portion thereof, to be unenforceable, that provision of the Agreement shall be enforced to the maximum extent permissible so as to effect the intent of the parties, and the remainder of this Agreement shall continue in full force and effect.

The software and documentation is provided with RESTRICTED RIGHTS.

Use, duplication, or disclosure by the Government is subject to restrictions as set forth in subdivision (b)(3)(ii) of The Rights in Technical Data and Computer Software clause at 252.227-7013.

Manufacturer is SIL International, 7500 West Camp Wisdom Rd., Dallas, Texas, 75236, United States of America.

Overview of the Galatia SIL Fonts

The Galatia SIL fonts are a new version of the SIL Galatia font released by SIL in 1997.

This new font package differs from the previous ones in the following ways:

1. They are Unicode fonts. The encoding is *entirely* different from the old fonts. Data typed with the old fonts will have to be re-typed or converted before it will display with the Galatia SIL fonts. The Galatia SIL fonts will only work in applications which support Unicode.
2. The name was changed to “Galatia SIL” to reflect new SIL font naming conventions.
3. The Latin-1 codepage (“A-Z”, “a-z” plus some punctuation, etc.) is included in the font. This is to assist with viewing Latin or Roman text. The Macintosh character set for US Roman and the 850 WE/Latin-1 encodings are also included.
4. You will need to use a keyboard program, but can use any Greek Unicode keyboard you prefer. The keyboard provided in this package for Windows is designed to match the old SIL Galatia SILGREEK keyboard. You can also use it as a basis for developing your own keyboard. No Macintosh keyboards are provided.

5. The following glyphs were added:

```
03D7  GREEK KAI SYMBOL
03F3  GREEK LETTER YOT
03F4  GREEK CAPITAL THETA SYMBOL
Combining Diacritics
Latin-1 (MS Windows CP 1252)
```

6. The following glyphs were revised:

```
03DD  GREEK SMALL LETTER DIGAMMA
      Shape changed to more standard form
      f-like shape retained as potential presentation form
0384  GREEK TONOS
      Redesigned to add slight tilt toward right
      Old shapes not retained
      (note: this affects all monotonic composites)
      period, colon, semicolon, greek question mark all enlarged
```

7. The fonts are provided only in raw TrueType format (usable in Windows/Mac OS X).

No transliteration fonts have been developed at this time.

Installation and Setup in Mac OS X

As this release is aimed primarily at Windows users, there are no detailed installation instructions. Simply copy the fonts to your Library/Fonts folder. Applications must support Unicode in order to use the fonts.

Installation and Setup in Microsoft® Windows®

Follow the instructions below, according to your operating system. The release will be available in a number of compressed formats. The Zip format is used in these instructions.

Windows 2000/XP Font Installation

The Galatia SIL fonts can be installed just like any other TrueType font. You may use any font installer programs you have, or the Control Panel application supplied with Windows.

Font installation using the Control Panel is summarized below.

1. Double-click the *GalSILv2.zip* file and extract all files to a folder of your choice.
2. Click **Start / Settings / Control Panel**.
3. Double-click on the **Fonts** icon to bring up the **Fonts** dialog.
4. Find and delete any old version(s) of the font *Galatia SIL* or *Galatia SIL Bold*. You do not have to delete any *SIL Galatia* font.
5. Click on the **File / Install New Font...** button to bring up the **Add Fonts** dialog.
6. Open the Drives list and select the folder containing the Galatia SIL files just unzipped. Go to the **Fonts** folder. In a few seconds the name of the fonts (*Galatia SIL (TrueType)* and *Galatia SIL Bold (TrueType)*) will appear in the List of Fonts.
7. Click **Select All**, and then **OK**. In a few seconds, the fonts will be listed in the **Installed Fonts** list.
8. Click on **File / Close** or exit the window.

Note that certain applications may not see the new font immediately. You may have to quit and restart the application for the font to become available.

Keyboard Installation

If you only wish to view Greek text, not type it, you can skip to your version of Office Language Settings, below.

Keyman 5 or later is needed for using the keyboard. Keyman's latest version is available from www.tavultesoft.com. If you will be writing or modifying keyboards, you will need the Developer version. Otherwise, get the regular version.

If you already have an up-to-date Keyman application installed, skip where it indicates to uninstall or install Keyman

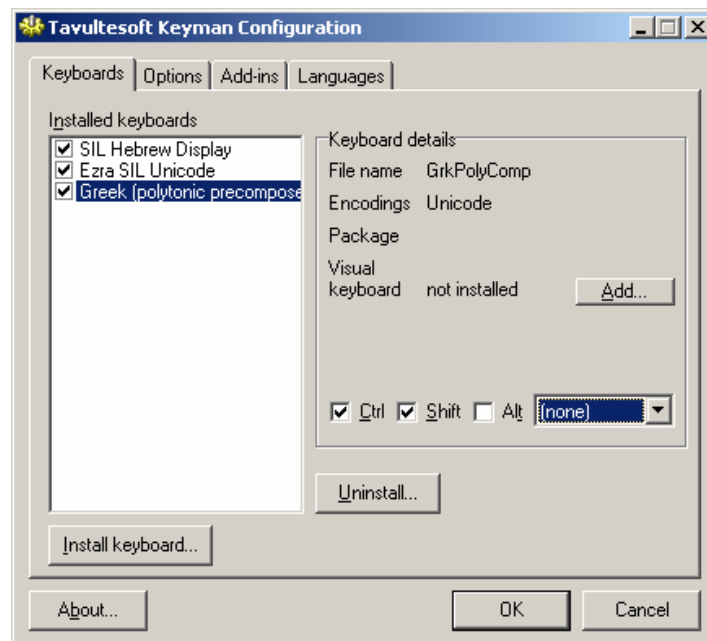
Keyman Install

1. Uninstall any previous versions of Keyman.
2. Install Keyman, **following the installation instructions provided with Keyman.**
3. If you haven't run Keyman for the first time yet, go to **Start / Programs / Tavultesoft Keyman** (or whatever location you chose during install.)
4. This will briefly show an 'About' screen and place the Keyman icon in your system tray (bottom left of screen).
5. Register your copy by right-clicking this icon (a rotated key with a 'k'), then click **About / Register.**
6. For Keyman 5, right click the Keyman icon, and click 'Start with Windows' if you want Keyman to be available each time you start-up. For Keyman 6, right-click the Keyman icon, click **Keyman Configuration....** Click the **Options** tab and checkmark "Start Keyman with Windows." Click **OK.**

Keyboard Install

The new Unicode keyboard is *GrkPolyComp.kmx*.

1. Install this keyboard by right-clicking the Keyman icon on your system tray.
2. Click **Keyman Configuration...**
3. Click the **Install Keyboard** button.
4. Browse to the location of the file *GrkPolyComp.kmx*. Choose it from the **Keyboards5** or **Keyboards6** folder, depending on your version of Keyman.
5. Click the file *GrkPolyComp.kmx* to select it. Then click **Open**, choose a hotkey (one is already selected for you but you may choose another one or choose none), then **Install**. For Keyman 6, choose the hotkey *after* selecting **Install**. Then click **OK**. You should get a message saying the keyboard was installed successfully.



6. Click **OK**.

Office 2000 Language Settings

To work with a keyboard in Windows, you should associate it with a language in **Start / Programs / Microsoft Office Tools / Microsoft Office Language Settings**. If not already installed, select Greek.

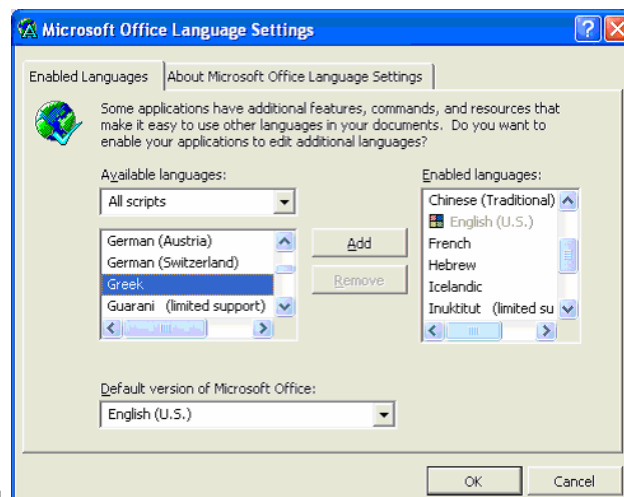


You can delay restarting until finishing these installation instructions.

Office XP Language Settings

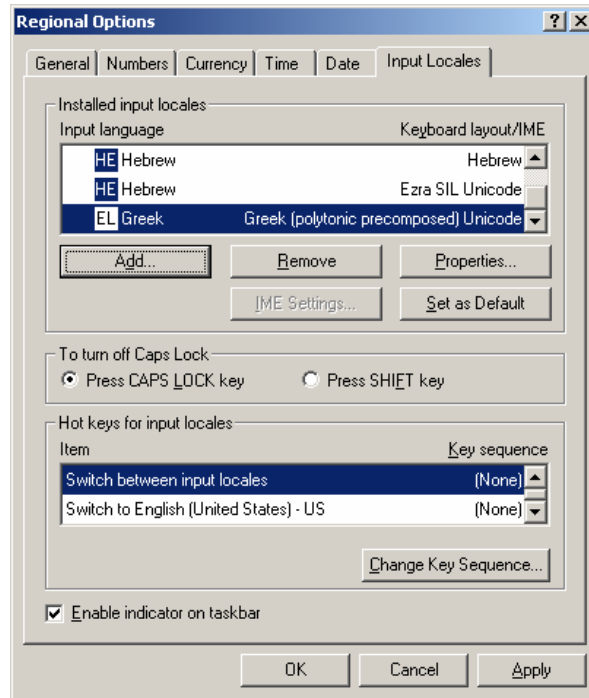
To work with a keyboard in Windows, you should associate it with a language in **Start / Programs / Microsoft Office Tools / Microsoft Office XP Language Settings**. If not already installed, select Greek.

Click on **Add** and then **OK**. Follow the directions on the screen. You can delay restarting until finishing these installation instructions.

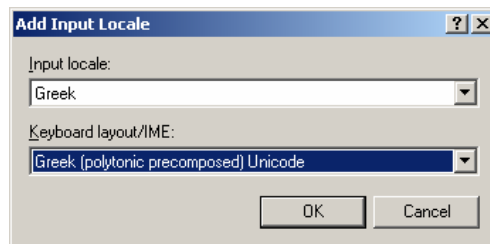


Input Locales (for Windows 2000)

1. Go to **Start / Settings / Control Panel / Regional Options**.
2. Click the Input Locales tab.
3. Either **Add** or highlight the Greek one and change its **Properties**. You can have more than one Greek locale.



4. Set the keyboard to **Greek (polytonic precomposed) Unicode**.



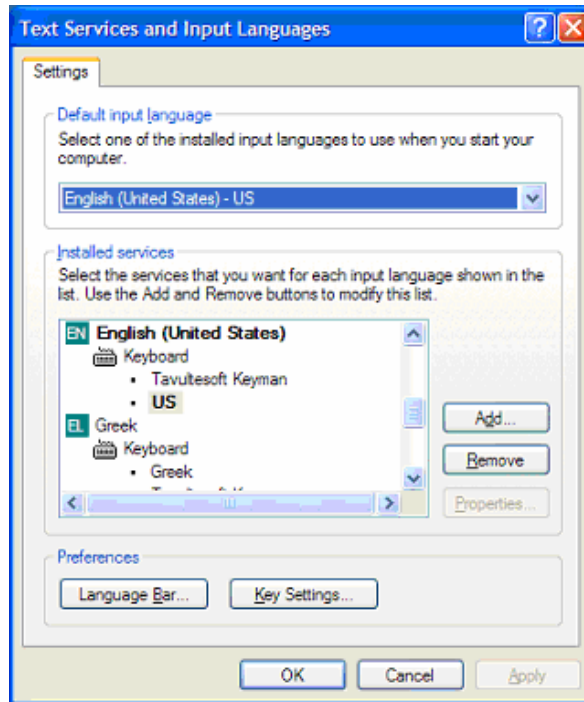
5. Click **OK, Apply, OK**. Once you have the Keyman keyboard associated with Greek, you should switch it on and off *only* using the input locale icon. You shouldn't use the Keyman icon. Close the Control Panel window.
6. Restart.

Using the Keyboard in Windows 2000

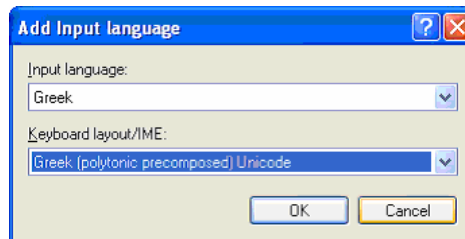
To use the keyboard, go to your application, set the font to **Galatia SIL**. Click the language icon on your system tray ('EN' for English) and select **EL Greek - Greek (polytonic precomposed) Unicode** as the keyboard. Begin typing. The keyboard layout is described in the documentation folder.

Input Locales (Text Services for Windows XP)

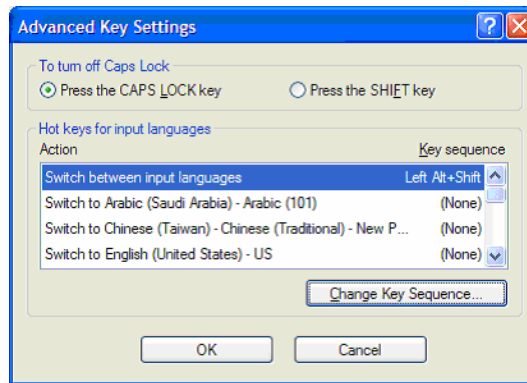
1. Go to **Start / Settings / Control Panel / Regional and Language Options**.
2. Select the **Languages** tab, then the **Details...** button. If not already installed, you will need to add Greek. Click **Add**.



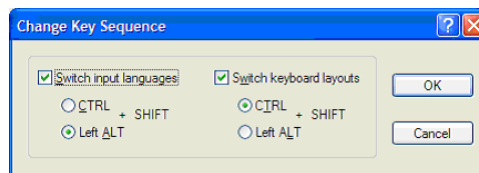
3. Set the Input Language to **Greek** and the keyboard to **Greek (polytonic precomposed) Unicode**.



4. Click **OK**. Once you have the Keyman keyboard associated with Greek, you should switch it on and off *only* using the Language Bar icon. You shouldn't use the Keyman icon.
5. From the Text Services window, you will also need to turn off keyboard switching. Click **Key Settings**.



6. Click **Change Key Sequence** while “Switch between input languages” is highlighted. Uncheck both boxes or set so that only one is on and uses CTRL, not Left ALT. Click **OK, OK, OK** and **OK**. You will have to reset this often, since Windows will go back to the default of using Left ALT for every keyboard you install. The default setting will interfere with any keyboard that defines Alt-Shift in combination with any key.



7. Close the Control Panel window.
8. Restart.

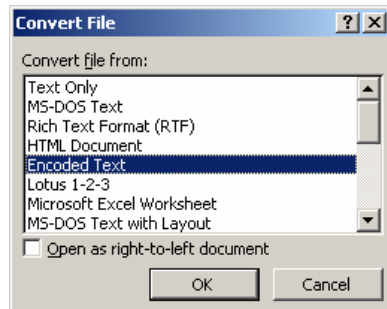
Note: You may install more than one keyboard for a given language. For instance, you can assign more than one keyboard to Greek, or add a keyboard to a language which also has a system keyboard. If a language has multiple keyboards assigned, you will see a small ‘keyboard’ icon appear in the system tray when you select that language. Click it and select the keyboard you wish to use.

Using the Keyboard in Windows XP

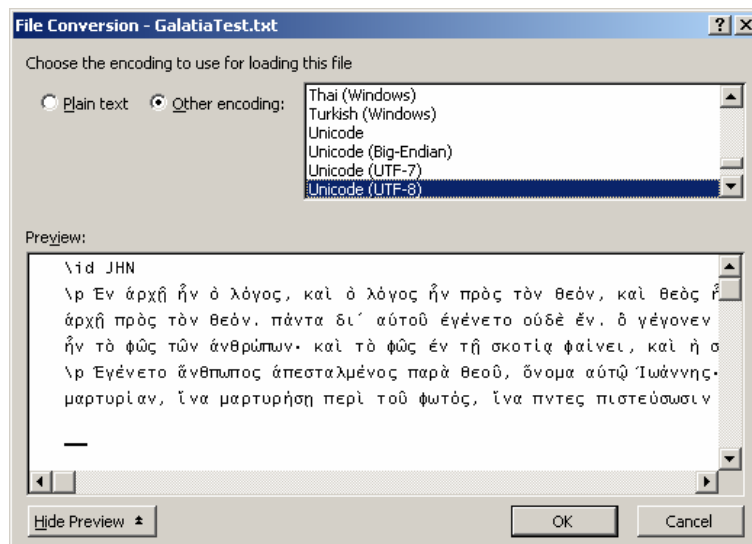
To use the keyboard, go to your application, set the font to **Galatia SIL**. Click the language icon on your system tray or Language Bar ('EN' for English) and select **EL Greek** as the language. Then click the small ‘keyboard’ icon and select the keyboard “Greek (polytonic precomposed) Unicode.” Begin typing. The keyboard layout is described in the documentation folder.

Opening a File - Windows 2000

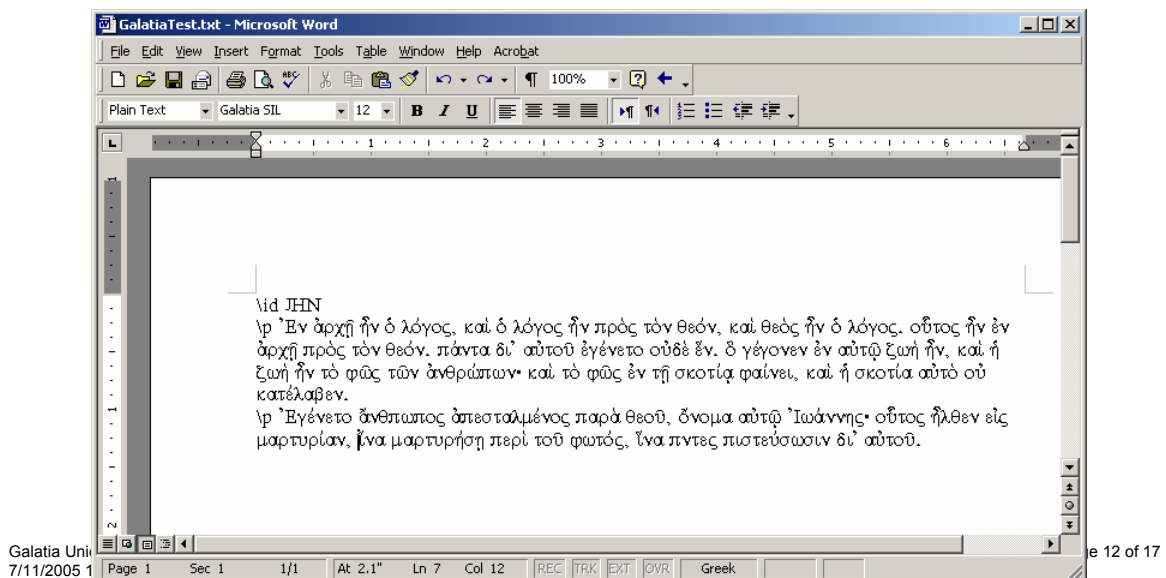
1. Open *GalatiaTest.txt* in Word. It is found in the **Documentation** folder. At the first box, make sure “Encoded Text” is highlighted. Click **OK**.



2. **Other encoding** should be selected and make sure “Unicode (UTF-8)” is highlighted. Click **OK**.



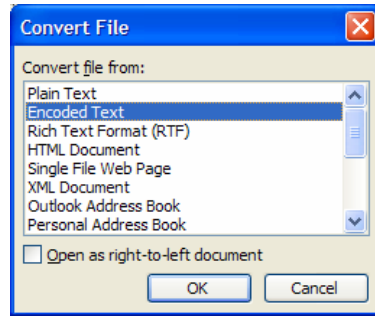
3. Select All and change the font to **Galatia SIL** and choose a point size.
4. With All selected, double-click the box that says what language this is and if necessary, change to **Greek**. It's at the bottom center of the screen on the same line as **Page** and **Sec**. It may say **English**. Desired Results:



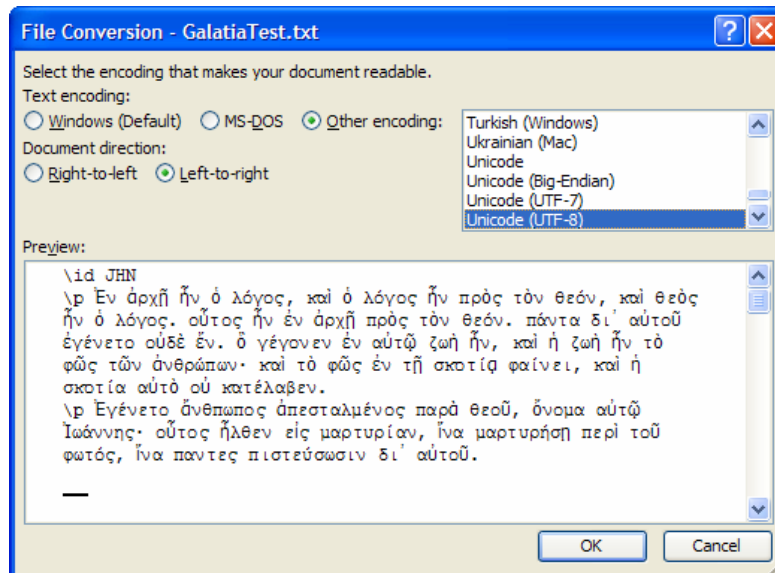
If the cursor is in an English section, it will say **English**. Click on a Greek line to check if it accepted **Greek**.

Opening a File - Windows XP

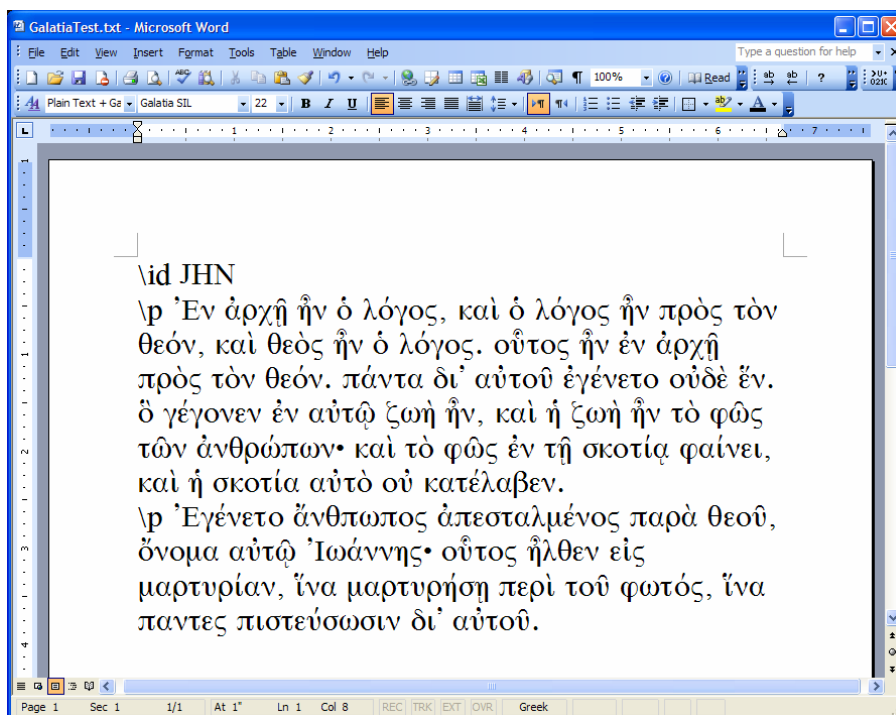
1. Open *GalatiaTest.txt* in Word 2003. It is found in the **Documentation** folder. At the first box, make sure “Encoded Text” is highlighted. Click **OK**.



2. Make sure “Other encoding” and “Unicode (UTF-8)” is highlighted. Click **OK**.



3. Select All and change the font to **Galatia SIL** and choose a point size.
4. With All selected, double-click the box that says what language this is and if necessary, change to **Greek**. It's at the bottom center of the screen on the same line as Page and Sec. It may say **English**. Desired Results:



If the cursor is in an English section, it will say **English**. Click on a Greek line to check if it accepted **Greek**.

Uninstalling a Font, Input Locale, and Keyboard in Windows 2000/XP

Fonts can be deleted and re-installed without interfering with either keyboards or the input locale. You may use any font uninstall utility, or follow these directions:

1. Click **Start / Settings / Control Panel**. Double-click **Fonts**.
2. Scroll down to *Galatia SIL* and/or *Galatia SIL Bold* and click once to highlight.
3. Click **File / Delete**. Click **Yes** to delete.
4. Close the Fonts window.

The Input Locale should be deleted before uninstalling the keyboard from Keyman.

1. Right-click the language icon (**EN** for English) on your system tray.
2. Click **Properties** (**Settings** in Windows XP).
3. Scroll down to the **Greek** input locale and the **Greek (polytonic precomposed) Unicode** keyboard. Click once to highlight.
4. Click **Remove**. Click **Apply** and **OK**.
5. Close the Input Locales window.
6. Right-click the Keyman icon in your system tray.
7. Click **Keyman Configuration....**
8. Click **Greek (polytonic precomposed) Unicode** once to highlight.
9. Click **Uninstall...** Click **OK, OK, and OK**.

The keyboard and its input locale are now deleted. You may need to repeat deleting the Greek input locale to completely remove it.

Technical Reference

Conversion

Two draft conversion programs have been included with this package. One is for Consistent Changes© (available from <http://www.sil.org/computing>) and the other is for TECKit© (available from <http://scripts.sil.org/TECKit>). Neither of the Greek mappings have been extensively tested.

Technical Support

As these fonts and utilities are distributed at no cost, we are unable to provide a commercial level of personal technical support. We will, however, try to resolve problems that are reported to us. We do wish to know about these problems so they can be addressed in future releases. Even if you are not having any specific problems, but have an idea on how this system could be improved, we want to hear your ideas and suggestions.

User Support

SIL International Publishing Services
7500 W. Camp Wisdom Rd.
Dallas, TX 75236
USA

Phone: (972) 708-7495

FAX: (972) 708-7388

E-mail: sil_fonts@sil.org